

Southeastern OSHA Training Institute Education Center

2024 Course Calendar

NC State University Industry Expansion Solutions (IES) and The University of Tennessee Center for Industrial Services offer OSHA training throughout the states in Region IV.

- › OSHA-authorized provider of technical courses based on OSHA Standards
- › Two safety certificate programs
 - › OSHA's Safety and Health Fundamentals Certificate Program
 - › Manager of Environmental Safety and Health (MESH) Certificate Program
- › A member of a national network of non-profit organizations authorized by OSHA to deliver occupational safety and health training for all levels of workers



Certificate Programs

OSHA's Safety and Health Fundamentals Certificate

Program supports OSHA's mission by training employees in occupational safety and health to reduce incident rates for workers. The certificate program is separated into tracks for Construction, General Industry, and Maritime Industry. For the Construction and General Industry tracks, participants must successfully complete a minimum of seven courses, comprised of three (3) required courses (minimum 39 hours), and at least four (4) electives (29 hours). ncstateies.com/OSHACertificateProgram

The Manager of Environmental Safety and Health (MESH) Certificate Program is designed for environmental, safety and health professionals who want to improve their practical knowledge while earning a valuable credential after successfully completing 100 credit hours of continuing education. General MESH requirements: ies.ncsu.edu/mesh

There are seven certifications:

- › MESH (General)
ncstateies.com/MESHRequirements
- › Industrial Hygiene (IH-MESH)
ncstateies.com/IH-MESH
- › Emergency Preparedness (EP-MESH)
ncstateies.com/EP-MESH
- › Construction (C-MESH)
ncstateies.com/ConstructionMESH
- › Public Sector (PS-MESH)
ncstateies.com/PublicSectorMESH
- › Environmental (E-MESH)
ncstateies.com/E-MESH
- › Advanced MESH
ncstateies.com/AdvancedMESH

* This course can be applied to OSHA's Safety & Health Fundamentals Certificate: ies.ncsu.edu/osha-certificate
All courses can be applied to the Manager of Environmental Safety and Health (MESH) certificate: ies.ncsu.edu/mesh

Construction Industry

OSHA 510 Standards for Construction

\$850 | MESH hours: 30 *

January 23–26 | Virtual Webinar
February 27–March 1 | Raleigh, NC
March 25–28 | Irmo, SC
April 23–26 | Charlotte, NC
May 14–17 | Swansboro, NC
June 25–28 | Greensboro, NC
July 30–August 2 | Surfside Beach, SC
August 27–30 | Irmo, SC
October 1–4 | Virtual Webinar
October 22–25 | Raleigh, NC
November 12–15 | Charlotte, NC

OSHA 500 Trainer Course for Construction

\$850 | MESH hours: 30

February 13–16 | Virtual Webinar
March 19–22 | Raleigh, NC
April 23–26 | Irmo, SC
May 14–17 | Charlotte, NC
June 18–21 | Swansboro, NC
July 23–26 | Greensboro, NC
August 20–23 | Surfside Beach, SC
September 17–20 | Irmo, SC
October 29–November 1 | Virtual Webinar
November 19–22 | Raleigh, NC
December 10–13 | Charlotte, NC

OSHA 502 Update for Construction Outreach Trainers

\$670 | MESH hours: 18

January 9–11 | Virtual Webinar
February 6–8 | Virtual Webinar
March 13–15 | Charlotte, NC
April 10–12 | Pinehurst, NC
May 15–17 | Virtual Webinar
May 29–31 | Swansboro, NC
July 9–11 | Surfside Beach, SC
August 20–22 | Virtual Webinar
September 11–13 | Charlotte, NC
October 9–11 | Irmo, SC
October 29–31 | Raleigh, NC
December 4–6 | Virtual Webinar



OSHA 2225 Respiratory Protection

\$850 | MESH hours: 26 *

May 7–10 | Raleigh, NC
October 22–25 | Irmo, SC

OSHA 2255 Principles of Ergonomics

\$1350 | MESH hours: 30 *

February 5–8 | Virtual Webinar
May 13–16 | Raleigh, NC
October 14–17 | Virtual Webinar

OSHA 2264 Permit-Required Confined Space Entry

\$850 | MESH hours: 26 *

March 12–15 | Irmo, SC
September 24–27 | Raleigh, NC

OSHA 2455 Safety and Health Management Program

\$670 | MESH hours: 18

August 7–9 | Raleigh, NC

OSHA 3015 Excavation, Trenching and Soil Mechanics

\$670 | MESH hours: 20 *

June 11–13 | Irmo, SC
December 3–5 | Raleigh, NC

OSHA 3085 Principles of Scaffolding

\$670 | MESH hours: 22 *

June 18–20 | Raleigh, NC

OSHA 3095 Electrical Standards

\$850 | MESH hours: 30 *

April 9–12 | Raleigh, NC
August 20–23 | Raleigh, NC

OSHA 3115 Fall Protection

\$670 | MESH hours: 22 *

April 30–May 2 | Irmo, SC
November 12–14 | Raleigh, NC

OSHA 7100 Machine Guarding

\$285 | MESH hours: 7.5

April 11 | Virtual Webinar

OSHA 7105 Introduction to Evacuation and Emergency Planning

\$285 | MESH hours: 7.5 *

April 10 | Virtual Webinar
December 9 | Virtual Webinar

OSHA 7120 Introduction to Combustible Dust Hazards

\$285 | MESH hours: 7.5

October 14 | Raleigh, NC

OSHA 7205 Health Hazard Awareness

\$285 | MESH hours: 7.5 *

March 5 | Virtual Webinar
August 29 | Raleigh, NC

OSHA 7215 Silica in Construction, Maritime, and General Industries

\$285 | MESH hours: 7.5 *

August 26 | Raleigh, NC

OSHA 7400 Occupational Noise Exposure Standards

\$285 | MESH hours: 7.5 *

April 8 | Virtual Webinar

OSHA 7405 Fall Hazard Awareness

\$285 | MESH hours: 7.5 *

May 3 | Raleigh, NC

August 28 | Raleigh, NC

October 8 | Irmo, SC

OSHA 7410 Managing Excavation Hazard / Trenching Operations

\$285 | MESH hours: 7.5 *

August 27 | Raleigh, NC

OSHA 7500 Introduction to Safety and Health Management

\$285 | MESH hours: 7.5 *

March 6 | Virtual Webinar

August 30 | Raleigh, NC

October 18 | Raleigh, NC

December 12 | Virtual Webinar

OSHA 7505 Introduction to Incident [Accident] Investigation

\$285 | MESH hours: 7.5 *

April 12 | Virtual Webinar

December 11 | Virtual Webinar

OSHA 7515 Job Hazard Analysis

\$285 | MESH hours: 7.5

May 8 | Greensboro, NC

OSHA 7845 Recordkeeping Rule Seminar

\$285 | MESH hours: 7.5 *

January 16 | Virtual Webinar

December 13 | Virtual Webinar

Auditing Skills for Safety Professionals

\$285 | MESH hours: 7.5

March 12 | Raleigh, NC

October 17 | Raleigh, NC

General Industry

OSHA 511 Standards for General Industry

\$850 | MESH hours: 30 *

January 30–February 2 | Virtual Webinar

February 27–March 1 | Charlotte, NC

March 25–28 | Raleigh, NC

April 16–19 | Virtual Webinar

May 21–24 | Irmo, SC

June 25–28 | Wilmington, NC

July 8–11 | Virtual Webinar

August 6–9 | Greensboro, NC

September 24–27 | Virtual Webinar

November 5–8 | Irmo, SC

OSHA 501 Trainer Course for General Industry

\$850 | MESH hours: 30

February 20–23 | Virtual Webinar

March 19–22 | Charlotte, NC

April 16–19 | Raleigh, NC

May 7–10 | Virtual Webinar

June 18–21 | Irmo, SC

July 23–26 | Wilmington, NC

August 6–9 | Virtual Webinar

September 17–20 | Greensboro, NC

October 15–18 | Virtual Webinar

December 3–6 | Irmo, SC

OSHA 503 Update for General Industry Outreach Trainers

\$670 | MESH hours: 18

January 17–19 | Virtual Webinar

February 14–16 | Virtual Webinar

April 2–4 | Charlotte, NC

May 22–24 | Pinehurst, NC

June 26–28 | Virtual Webinar

July 16–18 | Greensboro, NC

August 14–16 | Virtual Webinar

October 16–18 | Irmo, SC

November 6–8 | Virtual Webinar

December 4–6 | Charlotte, NC

OSHA 521 OSHA Guide to Industrial Hygiene

\$850 | MESH hours: 30 *

June 11–14 | Raleigh, NC



OSHA 2015 Hazardous Materials

\$850 | MESH hours: 30 *

August 13–16 | Raleigh, NC

OSHA 2045 Machinery & Machine Guarding Standards

\$850 | MESH hours: 30 *

October 1–4 | Raleigh, NC

OSHA 2225 Respiratory Protection

\$850 | MESH hours: 26 *

May 7–10 | Raleigh, NC

October 22–25 | Irmo, SC

OSHA 2255 Principles of Ergonomics

\$1350 | MESH hours: 30 *

February 5–8 | Virtual Webinar

May 13–16 | Raleigh, NC

October 14–17 | Virtual Webinar

OSHA 2264 Permit-Required Confined Space Entry

\$850 | MESH hours: 26 *

March 12–15 | Irmo, SC

September 24–27 | Raleigh, NC

OSHA 2455 Safety and Health Management Program

\$670 | MESH hours: 18

August 7–9 | Raleigh, NC

OSHA 3095 Electrical Standards

\$850 | MESH hours: 30 *

April 9–12 | Raleigh, NC

August 20–23 | Raleigh, NC

OSHA 7100 Machine Guarding

\$285 | MESH hours: 7.5

April 11 | Virtual Webinar

**OSHA 7105 Introduction to Evacuation and
Emergency Planning**

\$285 | MESH hours: 7.5 *

April 10 | Virtual Webinar

December 9 | Virtual Webinar

OSHA 7115 Lockout/Tagout [Controlling Hazardous Energy]

\$285 | MESH hours: 7.5 *

April 9 | Virtual Webinar

December 10 | Virtual Webinar

OSHA 7205 Health Hazard Awareness

\$285 | MESH hours: 7.5 *

March 5 | Virtual Webinar

August 29 | Raleigh, NC

**OSHA 7215 Silica in Construction, Maritime, and
General Industries**

\$285 | MESH hours: 7.5 *

August 26 | Raleigh, NC

OSHA 7300 Understanding OSHA's Permit-Required Confined Space Standard

\$285 | MESH hours: 7.5 *

October 16 | Raleigh, NC

OSHA 7400 Occupational Noise Exposure Standards

\$285 | MESH hours: 7.5 *

April 8 | Virtual Webinar

OSHA 7500 Introduction to Safety and Health Management

\$285 | MESH hours: 7.5 *

March 6 | Virtual Webinar

August 30 | Raleigh, NC

October 18 | Raleigh, NC

December 12 | Virtual Webinar

OSHA 7505 Introduction to Incident [Accident] Investigation

\$285 | MESH hours: 7.5 *

April 12 | Virtual Webinar

December 11 | Virtual Webinar

OSHA 7515 Job Hazard Analysis

\$285 | MESH hours: 7.5

May 8 | Greensboro, NC

OSHA 7845 Recordkeeping Rule Seminar

\$285 | MESH hours: 7.5 *

January 16 | Virtual Webinar

December 13 | Virtual Webinar

Auditing Skills for Safety Professionals

\$285 | MESH hours: 7.5

March 12 | Raleigh, NC

October 17 | Raleigh, NC

Hazardous Materials and EHS

40-Hour HAZWOPER for Hazardous Waste Site Workers

\$850 | MESH hours: 40

April 22–26 | Raleigh, NC

November 4–8 | Raleigh, NC

24-Hour Hazardous Material (HazMat) Technician-Level for Emergency Response

\$650 | MESH hours: 24

July 9–11 | Raleigh, NC

24-Hour HAZWOPER for Hazardous Waste Site Workers

\$650 | MESH hours: 24

April 22–24 | Raleigh, NC

November 4–6 | Raleigh, NC

8-Hour Hands-On HAZWOPER Refresher

\$295 | MESH hours: 8

April 25 | Raleigh, NC

July 11 | Raleigh, NC

November 7 | Raleigh, NC

8-Hour HAZWOPER for Environmental Professionals

\$295 | MESH hours: 8

June 4 | Raleigh, NC

DOT Hazardous Materials Transportation Refresher

\$295 | MESH hours: 7

March 6 | Raleigh, NC

September 11 | Virtual Webinar

DOT Hazardous Materials Transportation Training

\$495 | MESH hours: 14

March 5–6 | Raleigh, NC

September 10–11 | Virtual Webinar

Hazardous Waste Management for Generators (RCRA)

\$395 | MESH hours: 7

March 7 | Raleigh, NC

September 12 | Virtual Webinar

Arc Flash Awareness

\$385 | MESH hours: 7.5

October 15 | Raleigh, NC

Combined ISO 14001:2015 and ISO 45001:2018 Internal Auditor Training

\$1095 | MESH hours: 14

April 23–24 Raleigh, NC

ISO 14001:2015 Internal Auditor Training

\$850 | MESH hours: 14

September 9–10 | Raleigh, NC

ISO 45001:2018 Internal Auditor Training

\$850 | MESH hours: 14

November 6–7 | Raleigh, NC



Need to bring training on-site?

Many course offerings can be customized and brought to the work site. To learn more about on-site solutions, contact a Regional Manager in your area:

ncstateies.com/rm

Virtual Instructor-Led Training (VILT)

IES offers virtual instructor-led training (VILT) courses that bring high-quality training to you. Our expert instructors deliver content-rich virtual learning experience while maintaining the interactive and stimulating atmosphere of a traditional classroom. So whether you're at home, or in the office, IES VILT courses will provide the training you'll need to succeed.

For information on minimum requirements for our virtual classes, please visit go.ncsu.edu/vilt

Sign-up for the SafetyGuardian e-newsletter

ncstateies.com/safetyguardian

Timeout for Safety

Join the Southeastern OSHA Training Institute Education Center's safety and health team for virtual

monthly "Timeout for Safety" networking. Connect with your peers for an interactive conversation with timely information concerning current and future safety and health concerns. Each virtual session only lasts 30 minutes.

Join the monthly Zoom meeting: ncstateies.com/timeout

Free Downloadable Training Materials

Fall Prevention for Youth Workers

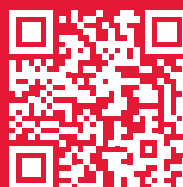
ies.ncsu.edu/fall-prevention

Tractor Talks for Agriculture Workers

tractortalk.ies.ncsu.edu

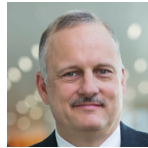
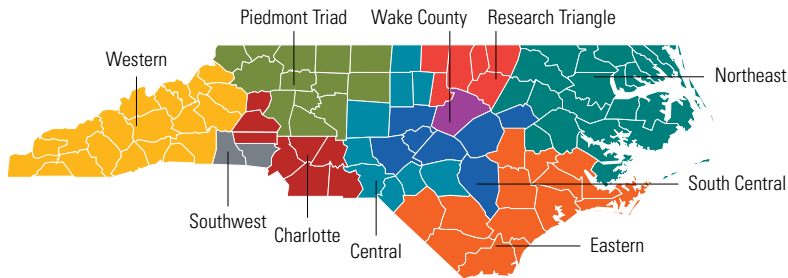
Workplace Safety Training for Temporary Workers

ncstateies.com/temporary



For the latest information on all courses scan the QR code or visit ies.ncsu.edu/courses

NC State University Industry Expansion Solutions (IES) Regional Managers Serve All 100 Counties in North Carolina.



Western

Chris McGraw

828.329.3119

chris_mcgraw@ncsu.edu

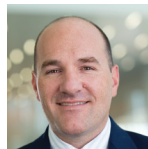


Piedmont Triad

Kami Baggett

919.830.7292

kami_baggett@ncsu.edu

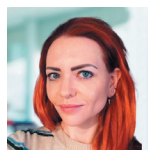


Charlotte

Jeff Woolard

980.395.2023

jeff_woolard@ncsu.edu



Southwest

Jennifer Fielder

704.380.0063

jennifer_fielder@ncsu.edu



Central

Mary Tillery

910.622.5849

mary_tillery@ncsu.edu



Wake County

Robert Crew

919.830.2941

robert_crew@ncsu.edu



South Central

Anna Mangum

919.210.6050

anna_mangum@ncsu.edu



Research Triangle

Mitch Poteat

919.607.0684

mitch_poteat@ncsu.edu

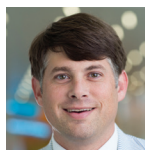


Northeast

Lori Benn

919.988.7475

lori_benn@ncsu.edu



Eastern

Alex Easley

910.617.5650

alex_easley@ncsu.edu



Defense Statewide

Michael Mullins

919.515.8812

michael_r_mullins@ncsu.edu



Contact the IES Regional Manager in your area.

ncstateies.com/RM

Solutions



Advanced Manufacturing & Technology Deployment



Business Growth, Innovation & Marketing



Business & Operational Assessments



Cybersecurity Strategies



Defense Industry Initiatives



Environment, Energy & Sustainability Services



Evaluation Services & Resource Development



Industrial & Systems Engineering



Instructional Design



Leadership & Organizational Development



Process Optimization Services



Management Systems & Quality



Southeastern OSHA Training Institute Education Center



Supply Chain & Supplier Scouting



Workplace Health & Safety

NC STATE UNIVERSITY Industry Expansion Solutions

We Can Help. 919.515.2358 | iesservices@ncsu.edu



NC State University Industry Expansion Solutions (IES) is the extension and outreach team for the College of Engineering and provides connections, networking with industry experts, and can help identify the resources, tools and customized programs needed to increase an organization's productivity, efficiency, quality and profit.

ies.ncsu.edu **f in @NCStateIES**

IES administers the National Institute of Standards and Technology Manufacturing Extension Partnership (NIST MEP) for North Carolina (NCMEP).

